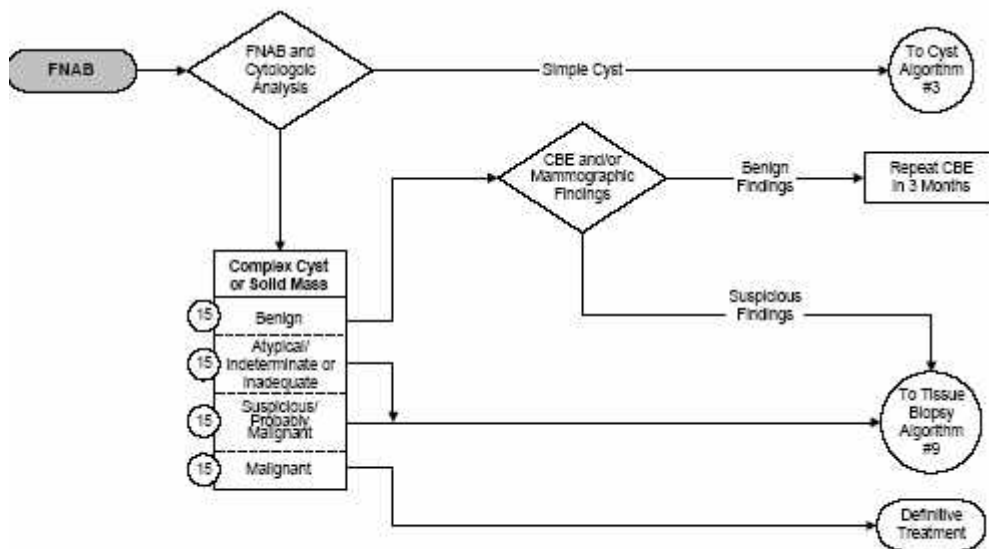


Algoritmo per il comportamento da tenere in seguito ad una FNAB

Clinical Breast Protocols Workgroup
 May 2000 Revised Second Edition
 California Department of Health Services, Cancer Detection Section
 Publisher: University of California – Davis
www.sdsu.edu/qap



note all' algoritmo

- 15 Breast FNAB adequacy is a controversial area and definitions will vary between laboratories. Cytologic definitions for the terms benign, atypical/indeterminate/inadequate, suspicious/probably benign, and malignant are included in the Appendix. For any inadequate result, the patient must be considered for further evaluation.